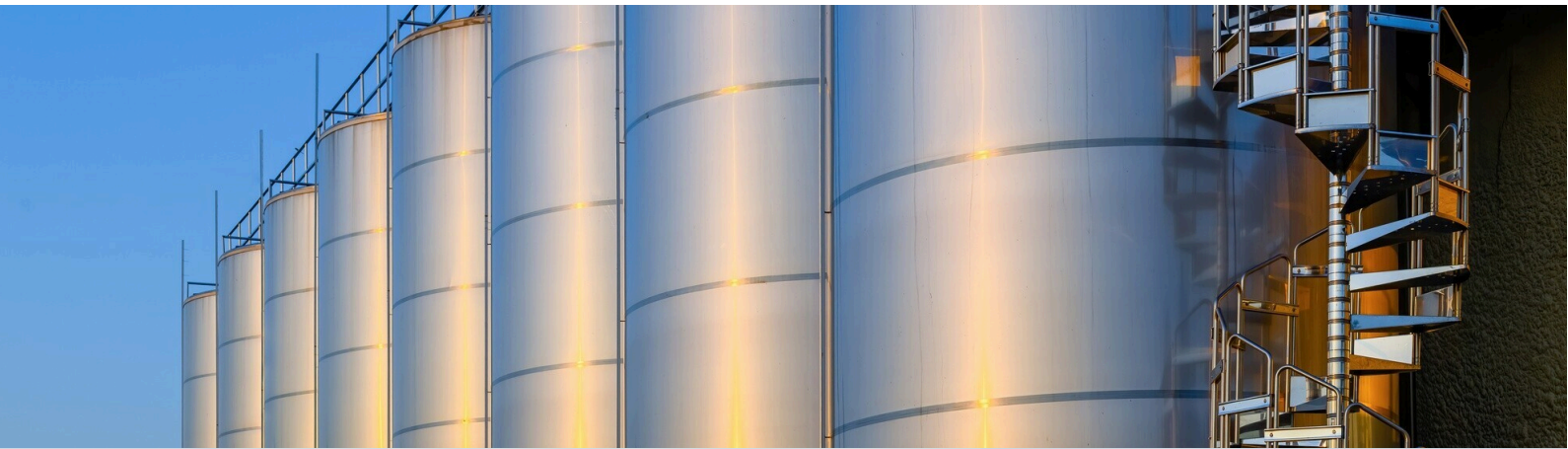


OIL SEAL CATALOGUE





INTRODUCTION



DTEC is a leading manufacturer in India, specializing in hydraulic and pneumatic seals, rotary shaft seals, and O-rings. The company prioritizes quality and technology, serving various industries. With over 60% of sales derived from exports to Europe and North America, DTEC addresses both replacement and original equipment markets across diverse applications, including gearboxes, pumps, and cylinders. All operations are centralized, enabling efficient fulfillment of sealing requirements, from standard O-rings to intricate profiles and large seals, while consistently broadening its product offerings.





Hydraulic seals:

Hydraulic seals are designed for high pressure applications and are utilized in light, medium, and heavy-duty hydraulic cylinders across various industries.



Piston seals:

Piston seals are dynamic seals that function in a single or double acting reciprocating motion. They are installed on piston heads, allowing movement within the barrel or bore of a hydraulic system.



Rod seals:

Hydraulic rod seals are static seals placed in glands or housings, designed to prevent leakage around the reciprocating rods of hydraulic cylinders.



Symmetrical seals:

Hydraulic symmetrical seals function as either piston seals or rod seals because of their symmetrical design.



Vee-packs:

Hydraulic symmetrical seals function as either piston seals or rod seals because of their symmetrical design.



Wiper seals:

Wiper seals are utilized in glands to prevent dust particles from entering the hydraulic cylinder. They effectively remove dust and dirt that accumulates on the rod, thereby preventing contamination of the hydraulic oil.



Wiper seals:

Guide rings or wear rings are utilized to direct the rods and pistons, thereby preventing damage.



Bonded seals:

Bonded seals are sealing components utilized in the bolt threads for face sealing.



Pneumatic Seals:

Pneumatic seals are utilized in cylinders with either low or high air pressure across various industrial applications.



Piston seals:

Pneumatic piston seals are dynamic seals that function through single or double acting reciprocating motion. They are installed on piston heads, facilitating movement within the barrel or bore of a pneumatic cylinder.



Rod seals:

Pneumatic rod seals are static seals placed in glands or housings to effectively seal the reciprocating rods of pneumatic cylinders.



Symmetrical seals:

Pneumatic symmetrical seals are utilized as either piston seals or rod seals because of their symmetrical design.



Cushion seals:

Pneumatic Cushion seals are used as damping seal in pneumatic cylinder.



Wiper seals:

Wiper seals are installed in glands to prevent dust particles from entering the cylinder, effectively wiping away any dust or dirt that accumulates on the rod.



Rotary Shaft Seals:

Rotary seals function as sealing components in rotating machinery such as gearboxes, pumps, and motors. They help maintain lubrication in bearings and prevent dust intrusion from external sources.



Fabric seals:

Fabric seals are adaptable rotary seals made from a cotton fabric-reinforced body, featuring a spring-loaded rubber sealing lip.



Heavy duty seals:

Heavy-duty seals feature a metal body designed with a spring-loaded rubber sealing lip, primarily used for robust rotary applications in steel, cement, and power plants.



High pressure rotary seals:

High-pressure rotary seals can endure demanding conditions in applications like hydraulic pumps, motors, and power steering systems.



External sealing or OD sealing rotary seals:

External sealing or OD sealing rotary seals are used for applications where the shafts remain stationary while the housing rotates.



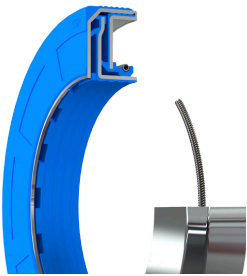
Teflon lip seals:

Teflon lip seals are produced using different PTFE blend materials suitable for high-temperature and high-speed applications, primarily in the chemical and food industries.



cassette seals:

Cassette seals provide reliable sealing performance in challenging applications. Designed for harsh conditions, they function continuously while facing higher levels of dust, moisture, and debris compared to on-road vehicles. Typically, they consist of a sleeve, a sealing lip with a spring, and multiple anti-dust lips in a labyrinth system to guard against contamination, reducing shaft finish needs and preventing grooving.



Customised seals:

Custom seals are designed specifically to meet customer application requirements without requiring significant alterations to the existing equipment setup.



Neck seals:

Neck seals are utilized to secure the bearing within the backup roll chock.



V-Rings:

V-Rings serve as dust seals or guards to prevent the ingress of water or coolant into the bearing housing.



Contact us: +91-9136546160

Write us: sales@dttecindia.com

Corporate office & Factory :

Survey No 150, H No 2, Ayesha Compound, Kaman Kohli, Kaman Bhiwandi highway, Chinchoti, Vasai(East) 401208, Maharashtra, India.

Head office address : 1st floor, bungalow no 1, anand india business hub, mahavir nagar, next to mahalaxmi hospital, ideal park, mira road east, thane - 401107, maharashtra, india.